

A full-page background image of a mountain biker in a forest. The biker is wearing a helmet and a dark jersey, leaning forward on the handlebars of a mountain bike. The bike has a "100%" sticker on the front. The scene is set in a dense forest with many trees and ferns. The entire image has a blue color cast.

TECHNICAL MANUAL

BLUE PAPER LAUFY

2020

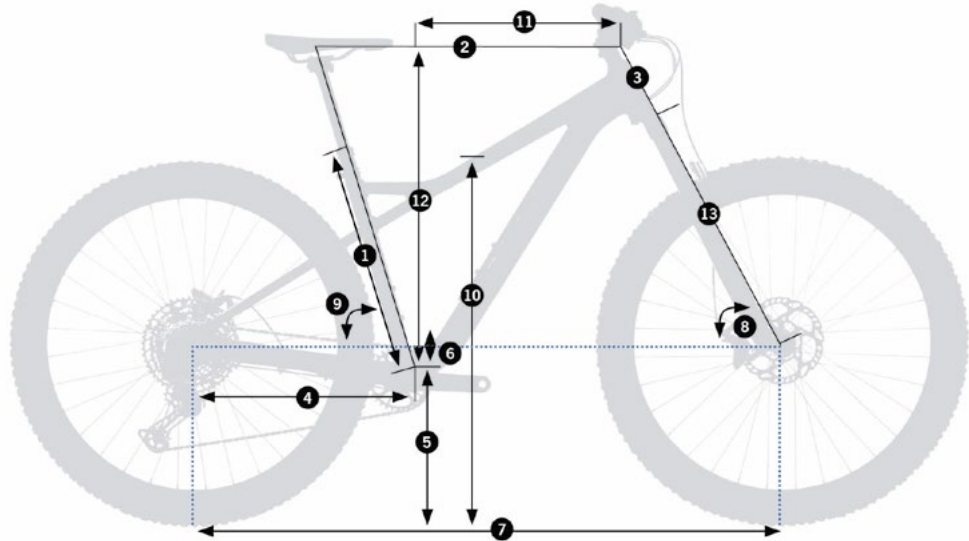
ORBEA



INDEX

GEOMETRY & ERGONOMY	4
TECHNICAL SPECIFICATIONS	6
HEADTUBE	8
REAR AXLE	9
FRAME HARDWARE	10
CABLING	12
MAINTENANCE	14
WARRANTY	16
ADDITIONAL INFORMATION	17

GEOMETRY & ERGONOMY



SIZE	S	M	L	XL
1 - Seat Tube (C-T)	381	432	470	521
2 - Top Tube (EFF)	578	606	632	662
3 - Head Tube	95	100	110	130
4 - Chainstay	435	435	435	435
5 - BB Height	313,5	313,5	313,5	313,5
6 - BB Drop	65	65	65	65
7 - Wheelbase	1146	1174	1202	1235
8 - Head Angle	65,5°	65,5°	65,5°	65,5°
9 - Seat Angle	678	714	726	763
10 - Standover	75°	75°	75°	75°
11 - Reach	409	435	459	484
12 - Stack	632	636	645	664
13 - Fork Length	547	547	547	547

HEIGHT (CM)	HEIGHT (IN)	SIZE
150-165	59.1"-65.0"	S
160-175	63.0"-68.9"	M
170-185	66.9"-72.8"	L
180-198	70.9"-78.0"	XL

* Estimated measurements.

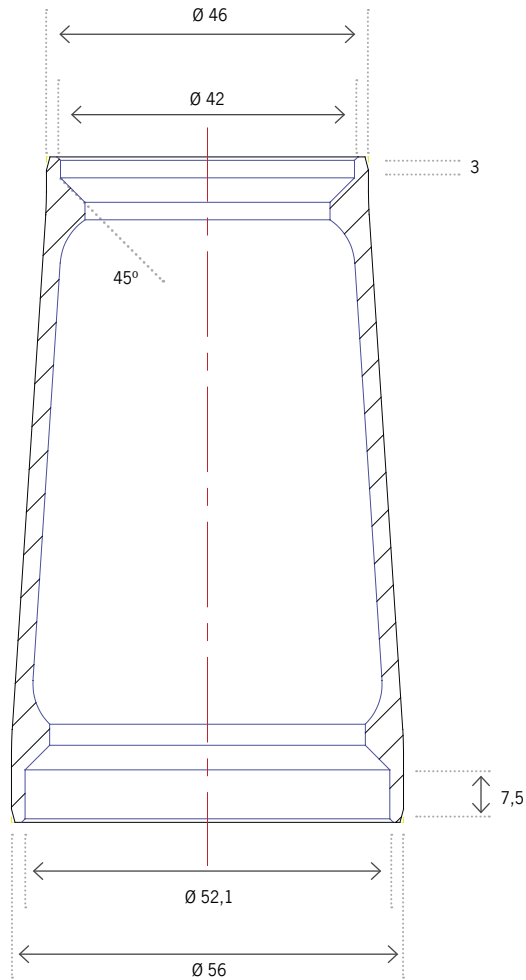
TECHNICAL SPECIFICATIONS

FRAME MATERIAL	ALUMINIO SERIES 6000
	TRIPLE BUTTED
INTENDED USE	TRAIL, ALL MOUNTAIN
SIZES	S,M,L,XL
FORK TRAVEL	140MM (150MM OPTION)
WHEEL SIZE	29" Y 27.5" (ALL SIZES)
MAX. TYRE SIZE	29X2.6, 27,5X3.0
FORK OFFSET	44mm (en 140mm y 150mm)
BOTTOM BRACKET	BSA 73MM THREADED
HEADSET	INTEGRATED 1 1/8-1,5
REAR AXLE STANDARD	BOOST 148X12
REAR AXLE MEASUREMENTS	12X179
REAR AXLE THREAD PITCH	1.25mm
SEATPOST DIAMETER	31.6mm
SEATCLAMP DIAMETER	35mm
SEATPOST MAX. INSERTION	S: 290MM / M: 250MM / L : 290MM / XL: 310MM
FRONT DERAILLEUR	N/A. SÓLO 1X
CHAINRING MAX SIZE	34T ROUND
CHAINRING MIN SIZE	30T
BRAKES	DISCO POST MOUNT *

MIN SIZE REAR ROTOR	180mm
MAX SIZE REAR ROTOR	180mm
CHAINGUIDE	ISCG05
CABLING	INTERNAL IN DOWNTUBE (FULL SLEEVE)
LEFT-ROAD CABLING READY	YES
BOTTLE HOLDER	1 IN SIZE S
	2 IN SIZES M, L, XL
DI2 COMPATIBLE	NO
DRIVETRAIN COMPATIBILITY	11 AND 12 SPEED
POWERMETER COMPATIBILITY	CONSULT POWERMETER MANUFACTURER SPECIFICATIONS

** Not all calipers and rotors in the market are compatible with all frames.
All componets specificated from Orbea have been tested. For aftermarket options, check componentes dimensions and tolerances befores purchasing.*

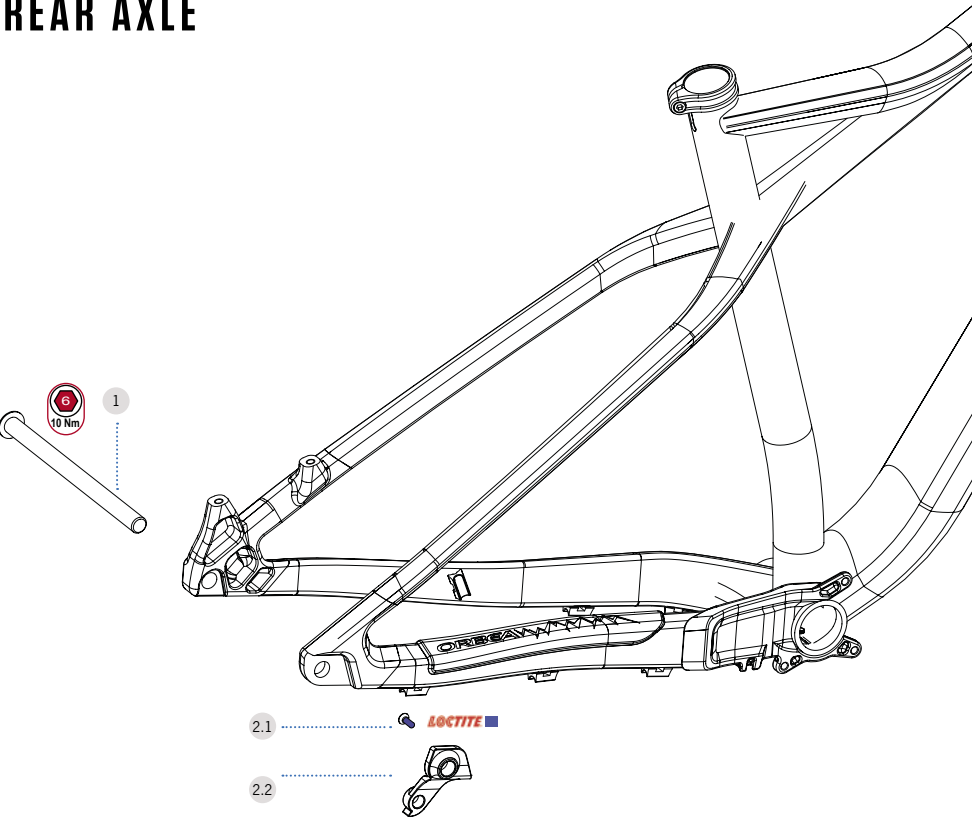
HEADTUBE



LAUFHEY 2020 HEADSET KIT

KIT N°: Y0000127	QUANTITY
HEADSET MTB ACROS 1 1/8-1,5 INTEGR.	1
TOPCAP+STARNUT ACROS 1 1/8	1

REAR AXLE



LOCTITE
Serie 200

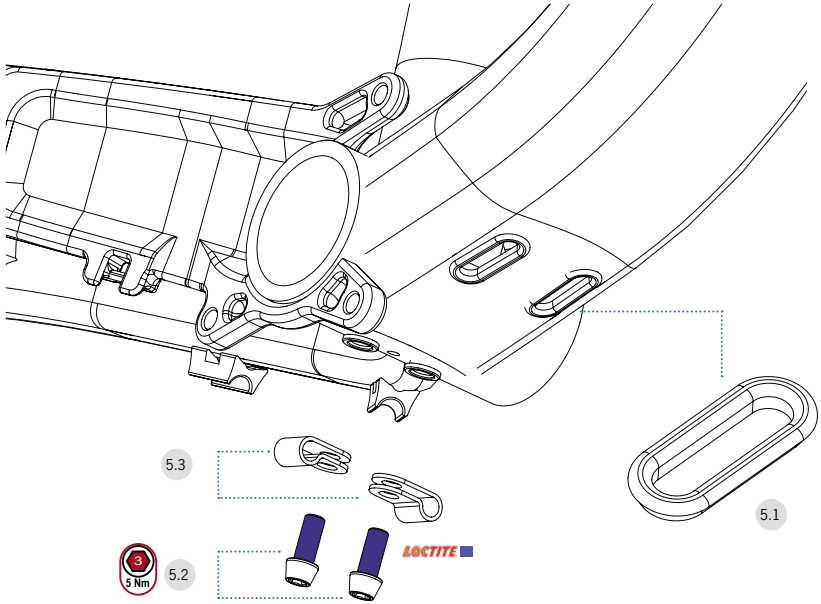
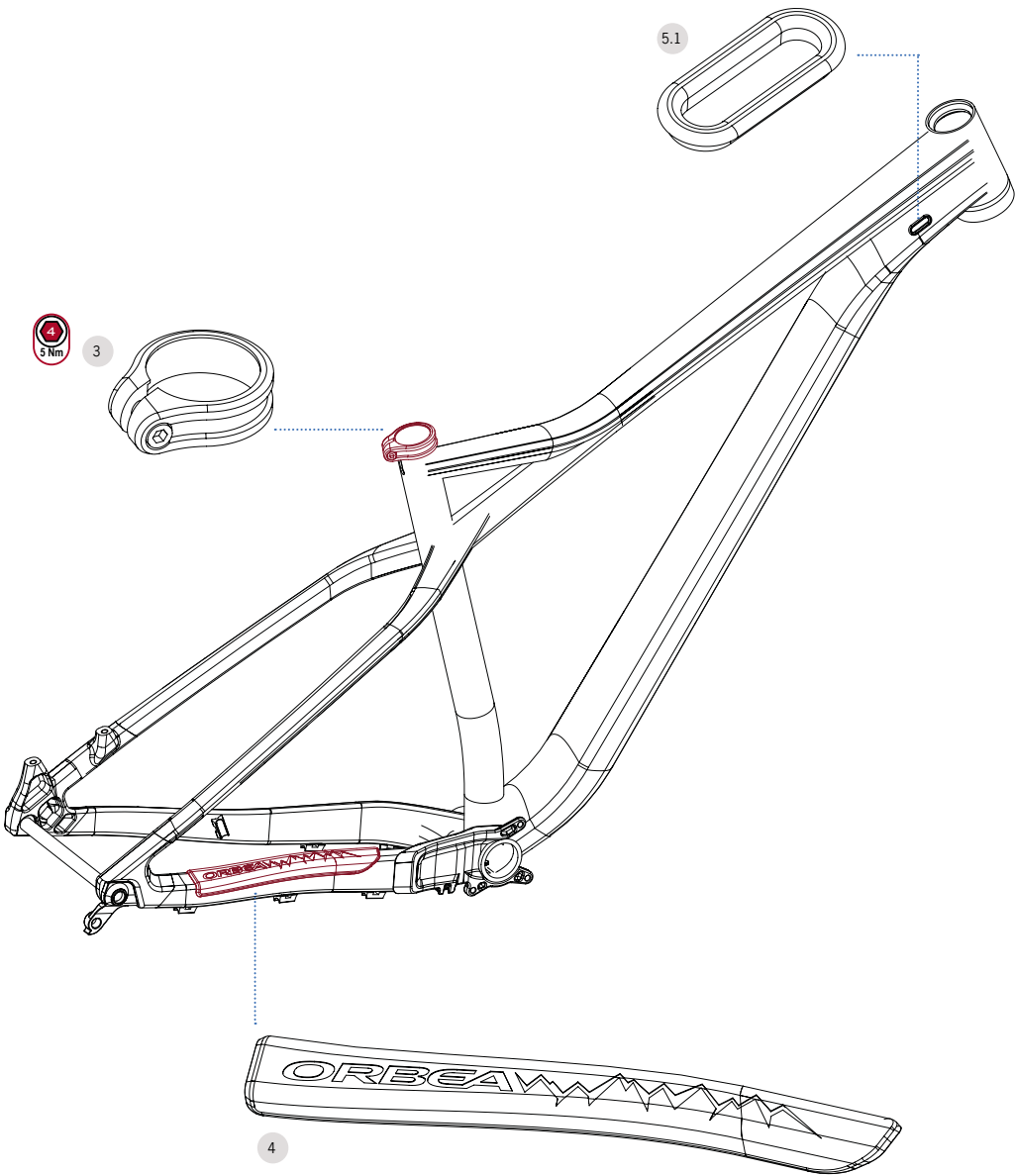
REAR AXLE

01	ART N°: 11100065	QUANTITY
	REAR AXLE 12x179x1.25	1

DERAILLEUR HANGER KIT LAUFHEY 2020

02	KIT N°: Y0000144	QUANTITY
2.1	BOLT M4x15	1
2.2	DERAILLEUR HANGER LAUFHEY X12	1

FRAME HARDWARE



LOCTITE
Serie 200

SEATCLAMP MTB 34.9 LAUFEBY 20

03	ART N°: 11160004	QUANTITY
	SEATCLAMP MTB 34.9 LAUFEBY 20	1

RUBBER CHAINSTAY PROTECTOR LAUFEBY 20

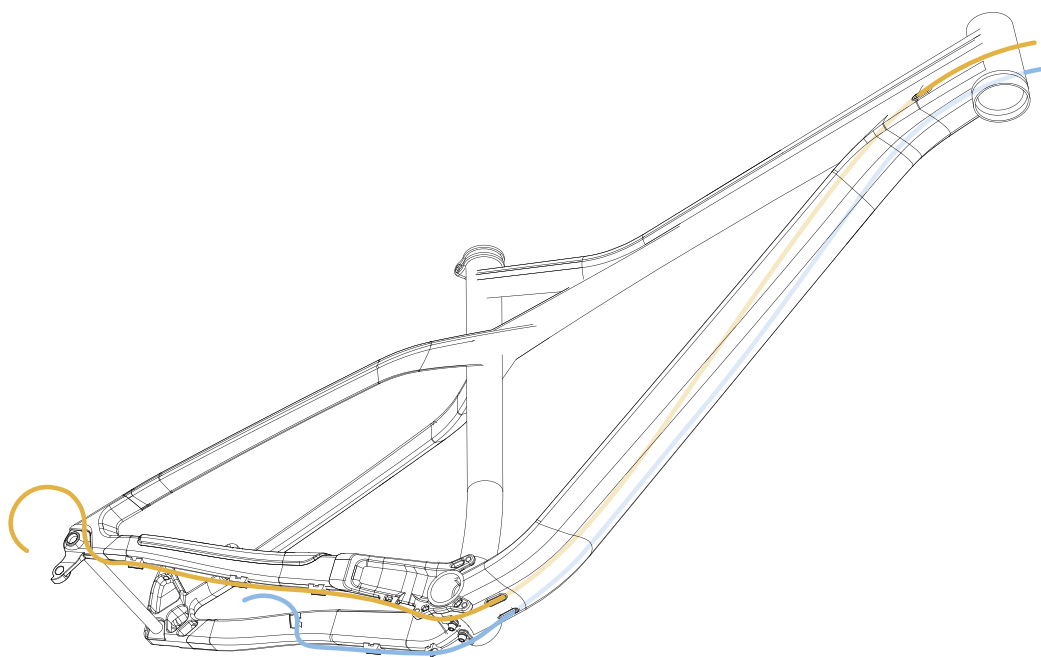
04	ART N°: 11000526	QUANTITY
	RUBBER CHAINSTAY PROTECTOR LAUFEBY 20	1

CABLEGUIDES+GROMMET KIT LAUFEBY 20

05	KIT N°: Y0000145	QUANTITY
5.1	RUBBER GROMMET 22,8	4
5.2	BOLT 5x10	2
5.3	CABLE GUIDE GEAR+BRAKE	2
	WASHER INOX M5	2

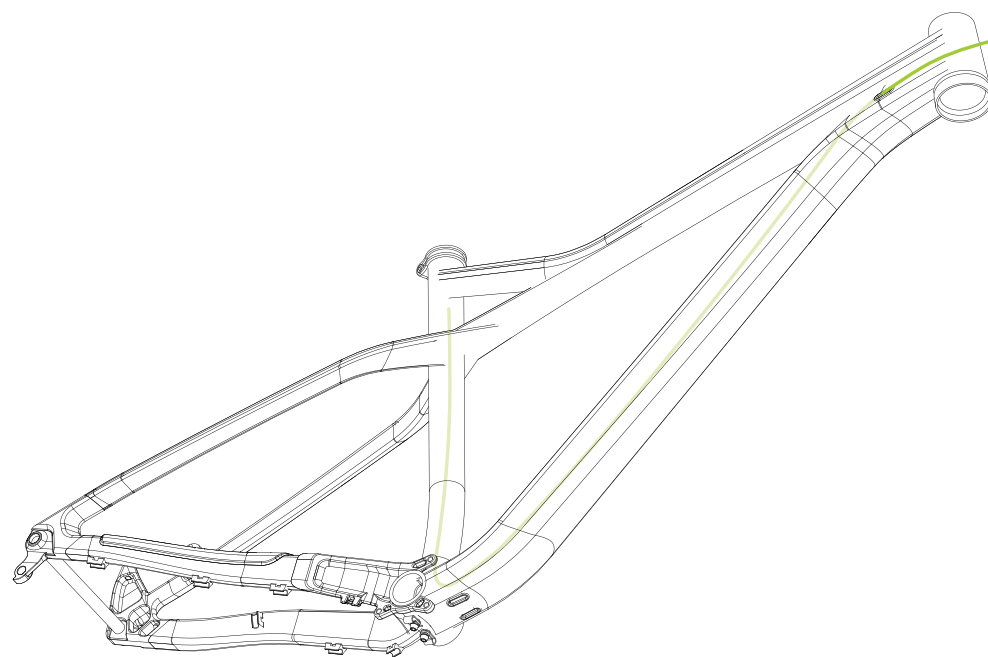
CABLING

REAR DERAILLEUR AND BRAKE CABLING



CABLING

DROPPER SEATPOST REMOTE CABLING



MAINTENANCE

Orbea products are carefully designed to be long-lasting, efficient and easy to maintain. The carbon and aluminum frames on the Laufey are extremely corrosion-resistant. However, your Orbea bicycle needs regular maintenance of its components in order to work properly and to ensure their longevity.

1) KEEP YOUR LAUFHEY CLEAN

Washing your bike with mild soap and water will keep you looking stylish and allow you to check the condition of the frame and components. Don't use high water pressure and avoid spraying water into bearings or frame tubes. Citrus degreasers are biodegradable and do a great job of removing dirty grease from gears and chain.

2) KEEP YOUR LAUFHEY LUBED

Once your bike is clean, it's a good time to put fresh lube on the chain. Use only enough to get inside the links and wipe off any excess because it will attract dirt. Headset and pivot bearings should be inspected every few months for smoothness and to ensure that the seals are intact and lube is clean.

3) INSPECT YOUR LAUFHEY BEFORE YOU RIDE

Do a quick check before every ride to make sure your bike is in excellent condition. It is very common to discover small issues at home that can become big problems on the trail. **CHAIN** Is the chain dirty, noisy or dry? Clean and lube your chain before riding. **BRAKES** Check your brakes to make sure they are working correctly. Check for missing/ loose caliper and rotor bolts. **TIRES** Look for damage to the sidewalls of your tires. Check and adjust tire pressure. **WHEELS** Spin the wheels and look for wobbles, check for loose or broken spokes. Check quick release levers to make sure they are functioning properly. **FRONT END** Stand over the saddle, pull on the brakes and rock the bike back and forth. Feel for any play or knocking that might indicate a loose headset, loose brake rotors or calipers, or worn fork bushings.

TEST RIDE Take a quick ride up and down the street to make sure your bike is shifting and braking properly. Listen for unusual noises.

4) BEARINGS

Bearings are one element subject to wear and tear. They must be in good condition to ensure that the other parts of the bicycle work correctly: on the wheels, the steering column and the bottom bracket, and particularly on the parts of the full suspension bicycle frame. Regularly check to make sure that the bearings turn freely in their housing and there are no signs of lateral play. Bearings that do not turn properly or that have any lateral play must be replaced immediately in order to prevent wear and tear to the parts of the frame. Very damp weather conditions can cause the bearings to wear out faster. Avoid washing your bicycle with pressurized water hoses. If you have any questions, take your bicycle to an Orbea dealer for correct diagnosis and maintenance.

AFTER A CRASH OR IMPACT

Falling is part of riding and it's impossible to avoid minor accidents. If you crash your Laufey, please make sure you are okay and seek medical attention if necessary. If you are not injured, you should check your bike before continuing:

1) Inspect your frame and components for damage. Do not ride your bike if any problems are detected.

WHAT TO LOOK FOR

Inspect Frame and fork for evidence of cracking or bending. If cracks are discovered, discontinue use immediately.

Check the drivetrain and spin the wheels to make sure components are operating correctly. If you discover damage to your components, discontinue use immediately.

Even if you don't find any damage, pay careful attention to the sound of your bike when you continue riding. Unusual noises can be caused by cracks or other problems. A well-maintained bike will be quiet and free of creaks or squeaks. Investigate and locate the source of any new noises.

2) Bring your bike to your Orbea dealer for professional inspection. Some damage can only be detected by disassembling the bike to check for cracks or other signs of stress.

A crash or impact can put extraordinary stress on your bike and components, causing them to fail or to fatigue prematurely. Failure can happen suddenly with no warning, causing loss of control, serious injury or death.

ORBEA WARRANTY

The constant effort we make every day to produce the highest quality bicycles enables us to offer the following warranty and coverage conditions:

LEGAL WARRANTY

Orbea guarantees its products by law for a period of 2 years or whatever has been stipulated as the legal warranty period in the country where the purchase was made, to the original owner of the bicycle/component.

This warranty covers Orbea products against manufacturing defects and/or lack of conformity and guarantees the repair or replacement of the defective product at no cost to the affected customer. Likewise, this warranty also covers paint, varnish and corrosion defects on all frames and rigid forks assembled on our bicycles during the period specified in the first paragraph of this warranty.

This warranty does not cover in any case damage derived from misuse or the lack of maintenance, or from the normal wear and tear of perishable parts, such as, but not limited to: seals, bearings, handlebar tape, spokes, hub, threads, tires, seat, etc.

See the full description of the coverage and the legal warranty conditions at:
<https://www.orbea.com/int-en/warranty-benefits/>

ORBEA LIFETIME WARRANTY

As a complement to the legal warranty, Orbea offers the original buyer of the bicycle, under the condition of having registered their bicycle on the Orbea website within a period of 30 days following its purchase, the Orbea Lifetime Warranty, which covers the frames and rigid forks we assemble on our bicycles, with no time limit, against manufacturing defects.

This warranty extends the original period of coverage against paint, varnish or corrosion defects on our frames and rigid forks for one additional year after the end of the legal warranty period.

See the full description of the coverage and the Lifetime Warranty conditions at:

<https://www.orbea.com/int-en/warranty-benefits/>

REGISTER YOUR BICYCLE

In order to benefit from the extension of the Orbea Lifetime Warranty, register your bike within the first 30 days of having purchased it at www.orbea.com

01. REGISTER YOUR ACCOUNT



02. REGISTRATION NUMBER

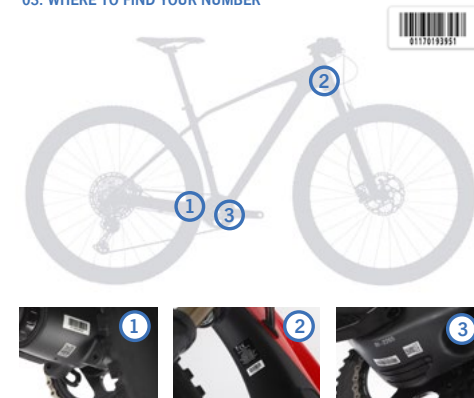
MY INFORMATION WARRANTY REGISTRATION ORDERS YOUR SAVED BIKES BIK

ACTIVATE YOUR REGISTRATION NUMBER

Enter your bike's registration number and start enjoying your Orbea warranty.

<p>* REGISTRATION NUMBER <small>Where is my barcode?</small></p> <input type="text"/>	<p>* DATE OF PURCHASE - YYYY-MM-DD</p> <input type="text"/>
<p>* HOW SATISFIED ARE YOU WITH THE ORDERING PROCESS?</p> <p> <input type="radio"/> Very satisfied <input type="radio"/> Satisfied <input type="radio"/> Neither satisfied nor dissatisfied <input type="radio"/> Not satisfied </p>	<p>* HOW SATISFIED ARE YOU WITH THE PRODU</p> <p> <input type="radio"/> Very satisfied <input type="radio"/> Satisfied <input type="radio"/> Neither satisfied nor dissatisfied <input type="radio"/> Not satisfied </p>

03. WHERE TO FIND YOUR NUMBER



WARRANTY CLAIM PROCESS

All warranty claim processes must be processed through an Orbea dealer, who will provide the company with the necessary documentation for the diagnosis of said claim. The dealer will inform the customer of the decision made by Orbea.

ADDITIONAL INFORMATION

ORBEA participates actively on facebook and Twitter with our fantastic global community of riders. Looking to find spots to ride or plan a vacation? Someone will have the answers:

FACEBOOK

www.facebook.com/OrbeaBicycles

TWITTER

www.twitter.com/Orbea/

YOUTUBE

Visit our Orbea Channel on You Tube for a variety of helpful setup and tech videos:
www.youtube.com/user/OrbeaBicycles

INSTAGRAM

www.instagram.com/orbeabicycles

ORBEA CONTENT

View and download photos, videos and documents.
content.orbea.com/us-en/

BLOG ORBEA

www.orbea.com/es-es/blog/

YOUR ORBEA DEALER

Our dealers are experts and should be able to assist you with setting up and maintaining your Orbea bicycle. A complete listing of Orbea dealers and distributors can be located on our website:
www.orbea.com/us-en/dealers/?country=INT

SUPPORT

For technical questions about Orbea products, write to:
support@orbea.com

For any other question:
orbea@orbea.com



ORBEA

WWW.ORBEA.COM